

uFace402 Plus

Multi-Biometric
Time Attendance and
Access Control Terminal



uFace402 Facial multi-biometric time & attendance and access control terminal supports up to 3,000 face **and Palm** templates, 4,000 fingerprint templates and 10,000 cards (optional). With ZKTeco latest hardware platform and algorithm, it offers brand new Uland user-friendly operation interface to provide smooth user experience. With advanced face algorithm and multi-biometric verification technology, the terminal's security level of verification is significantly enhanced.

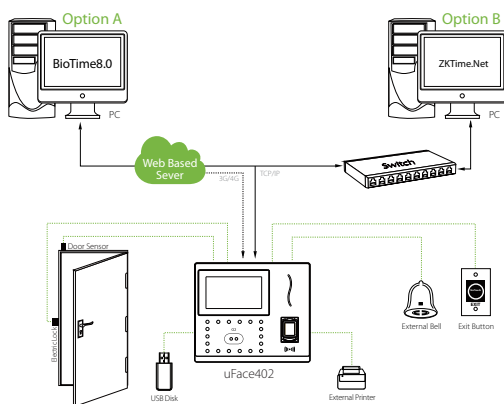
Features

- 3,000 face & **Palm** and 4,000 fingerprint templates
- Multi-language
- High verification speed
- Advanced and user-friendly UI
- Optional built-in battery backup, providing approximately 4 hours of continuous operation
- New Framework firmware, easy to extend functions and customize client's requirements
- One face template is registered for one user only
- Able to detect whether the face is an actual face or a photo, enhancing the security level of verification

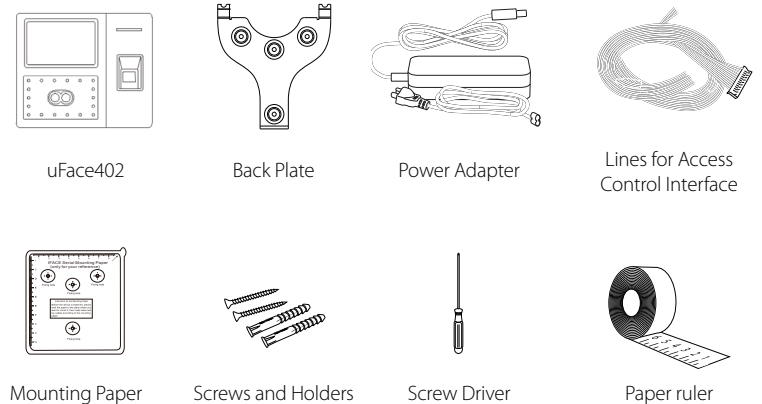
Specifications

	uFace402	
Display	4.3-Inch Touch Screen	
Face capacity	3,000	
Palm capacity	3,000	
Fingerprint capacity	4,000	
Card or Pin capacity	10,000	
Logs capacity	100,000	
Communication	TCP/IP, USB Host, WiFi (optional)	
Standard Functions	Automatic Status Switch, Self-Service Query, Work Code, SMS, DST, T9 Input, 9 Digit User ID, Scheduled Bell, Photo ID, Wiegand Out, Camera	
Optional Functions	ID/IC/HID Card, 3G/4G, ADMS, 2000 mAh Backup Battery, External Printer and Bell	
Power Supply	12V 3A	
Operating Temperature	0 °C- 45 °C	
Operating Humidity	20%-80%	
Dimensions(Length*Width*Thickness)	193.6 x 165 x 111mm	
Package Weight(KG)	1.84	1.87

Configuration



What's in the Box



V2.0 2021.07.14